

Understanding Diagnostic Pathways in Systemic Sclerosis and Systemic Sclerosis-Associated Interstitial Lung Disease (SSc-ILD)

Shervin Assassi,¹ Nan Shao,² Ziwei Yin,² Elizabeth R Volkman,³ Donald F Zoz,² Thomas B Leonard²

¹Division of Rheumatology and Clinical Immunogenetics, University of Texas McGovern Medical School, Houston, Texas, USA; ²Boehringer Ingelheim Pharmaceuticals, Inc., Ridgefield, Connecticut, USA; ³Department of Medicine, Division of Rheumatology, University of California, David Geffen School of Medicine, Los Angeles, California, USA.

INTRODUCTION

- ILD is a common manifestation of SSc and the leading cause of SSc-related death.¹
- SSc-ILD is usually detected in a patient known to have SSc, but ILD may be the initial presentation of SSc.^{2,3}
- Optum's de-identified Clinformatics® Data Mart Database, a commercial and Medicare Advantage claims database, covers >60 million patients in the US.

AIM

- To investigate documentation of ILD prior to a diagnosis of SSc.

METHODS

- The study period was between 1 January 2007 and 30 June 2019.
- Two cohorts of patients with SSc aged ≥18 years were defined based on ICD-9 and ICD-10 codes:

ICD-9 cohort

- SSc index date between 1 January 2010 and 30 September 2015 based on ICD-9-CM codes.
- ≥2 medical claims associated with SSc on different dates within 1-year period.
- ≥3 years continuous enrollment in the database prior to SSc index date.

ICD-10 cohort

- SSc index date between 1 October 2017 and 30 June 2019 based on ICD-10-CM codes.
- ≥2 medical claims associated with SSc on different dates within 1-year period.
- ≥2 years continuous enrollment in the database prior to SSc index date.

SSc index date is date of first insurance claim related to SSc.

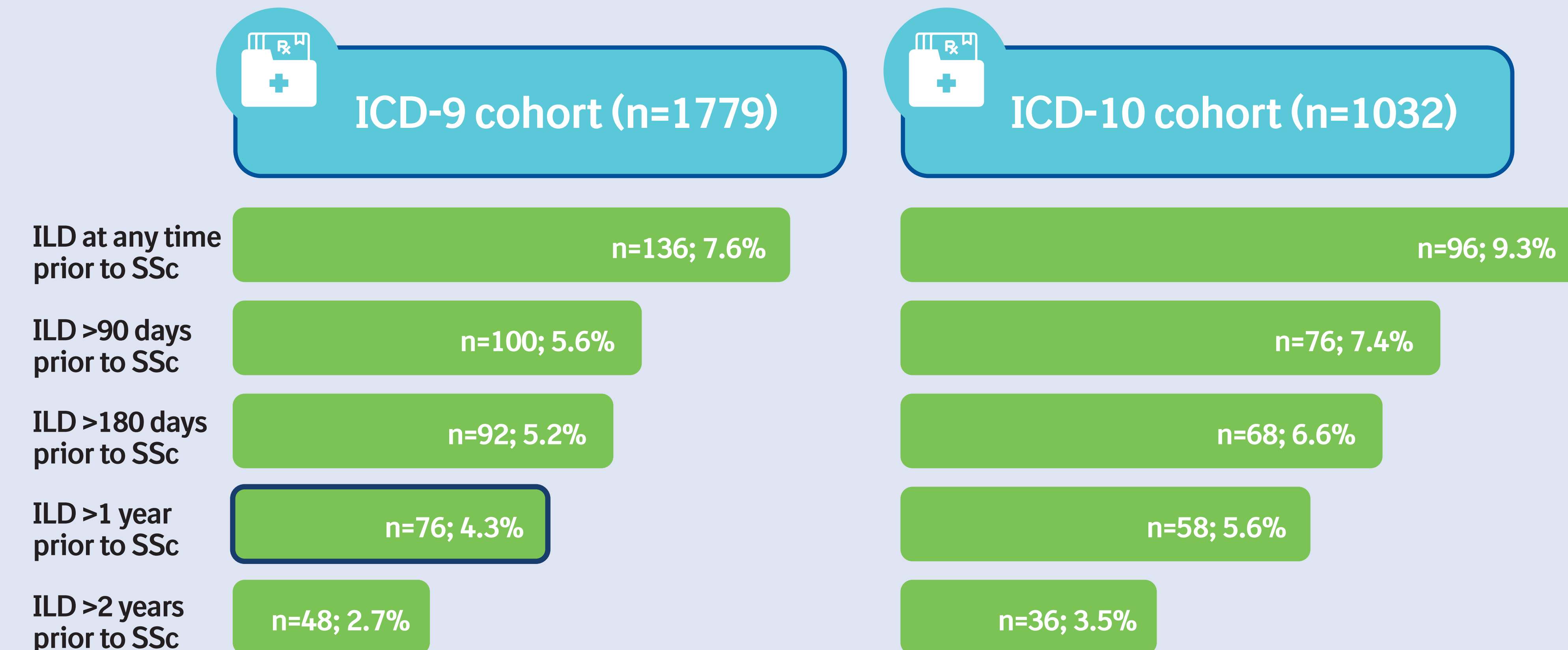
- ILD was defined as ≥2 medical claims associated with ILD on different dates.
- We determined the proportion of patients who had their second claim associated with ILD prior to their SSc index date and evaluated the characteristics of patients who had ILD >1 year prior to their SSc index date in the ICD-9 cohort.
- Analyses were descriptive.

CONCLUSIONS

- Based on data from a large US health insurance database, 4–6% of patients with SSc had claims for ILD more than 1 year prior to a claim for SSc.
- These data are consistent with previous studies showing that SSc can have an impact on the lung early in the course of SSc and demonstrate the importance of screening patients with ILD for SSc.

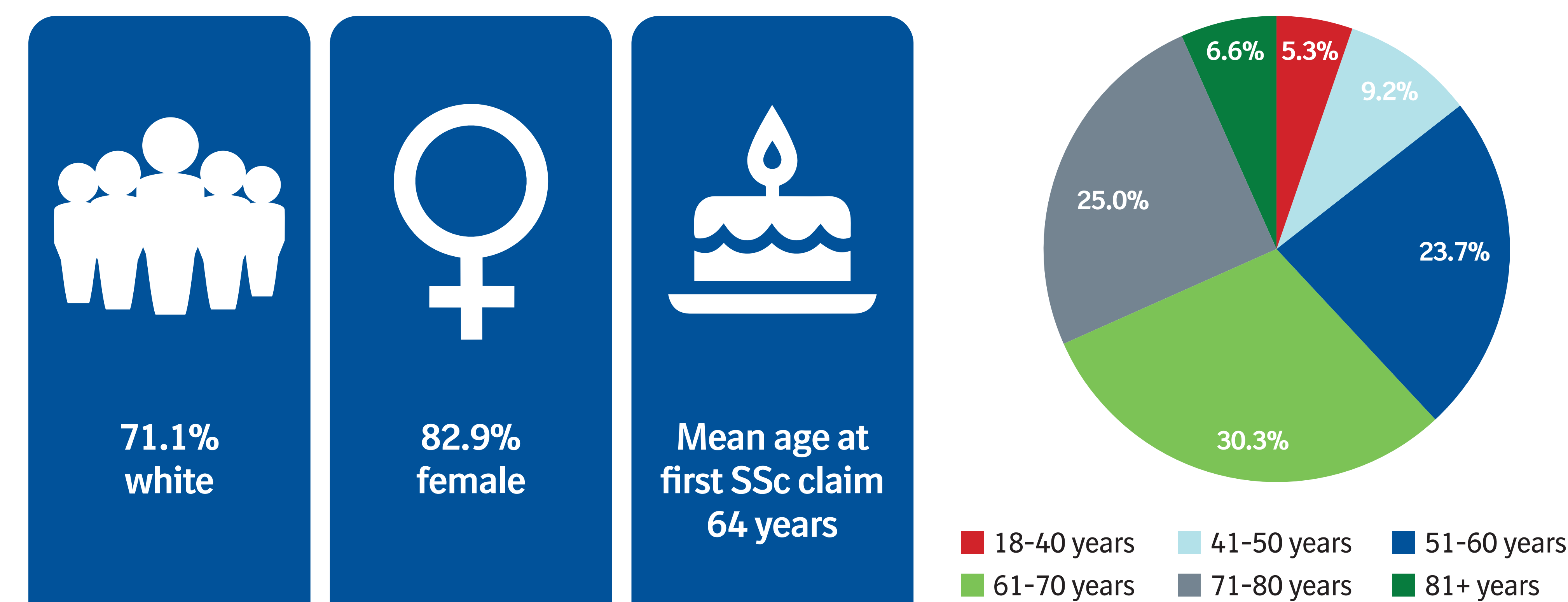
RESULTS

Proportion of patients who had second ILD claim prior to SSc index date.

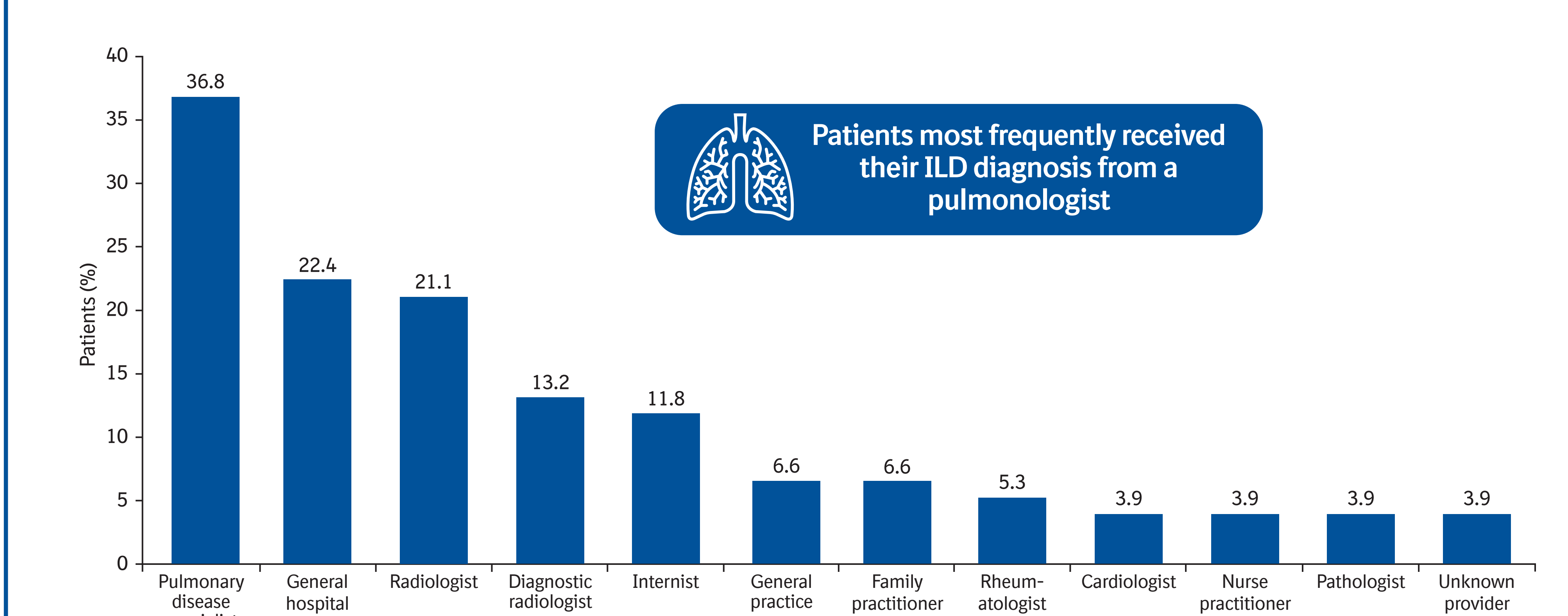


SSc: date of first insurance claim related to SSc. ILD: date of second medical claim associated with ILD.

Characteristics of patients in ICD-9 cohort who had second ILD claim >1 year prior to SSc index date (n=76).

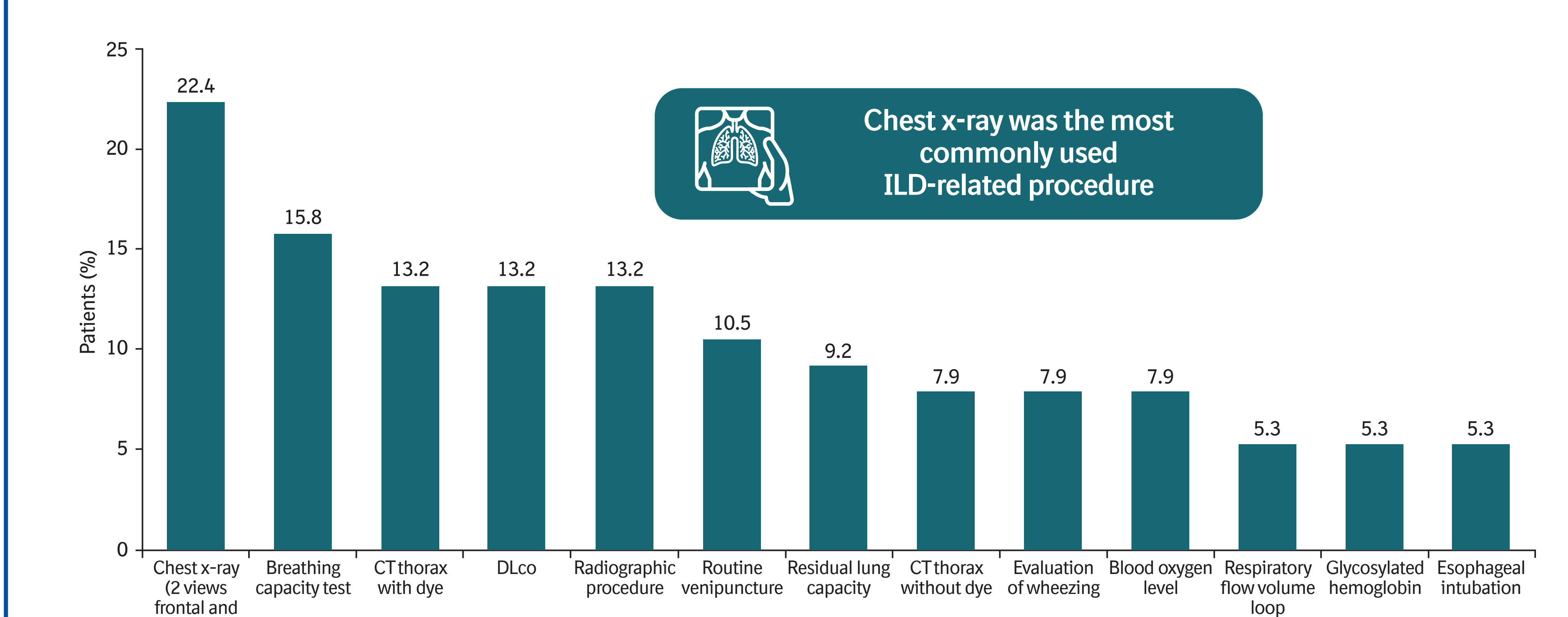


Providers seen during first or second ILD claim by patients in ICD-9 cohort with second ILD claim >1 year prior to SSc index date (n=76).



A patient could be counted in multiple categories.

Procedures received during first or second ILD claim by patients in ICD-9 cohort with second ILD claim >1 year prior to SSc index date (n=76).

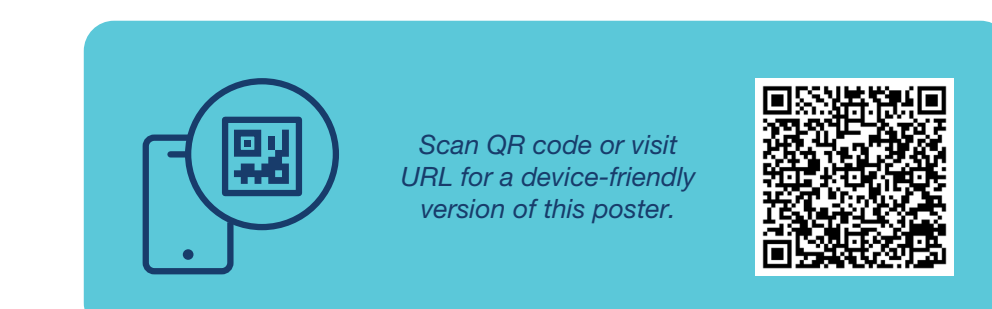


A patient could be counted in multiple categories.

- REFERENCES
1. Rubio-Rivas M et al. Semin Arthritis Rheum 2014;44:208–219.
 2. Mittoo S et al. Respir Med 2009;103:1152–1158.
 3. Hernandez-Gonzalez F et al. Medicine (Baltimore) 2020;99:e18589.

ACKNOWLEDGMENTS AND DISCLOSURES

This analysis was funded by Boehringer Ingelheim Pharmaceuticals, Inc. (BIPI). The authors meet criteria for authorship as recommended by the International Committee of Medical Journal Editors (ICMJE). The authors did not receive payment for the development of this poster. Editorial support and formatting assistance was provided by Julie Fleming and Wendy Morris of FleishmanHillard Fishburn, London, UK, which was contracted and funded by BIPI. BI was given the opportunity to review the poster for medical and scientific accuracy as well as intellectual property considerations. SA reports grants from BI, Bayer, Biogen, Momenta and has served as a consultant and/or speaker for BI, Medscape, Integrity and Continuing Education. NS, ZY, DFZ and TBL are employees of BI. ERV reports grants from Forbus and Corbus Pharmaceuticals and has served as a consultant for BI and Forbus.



<https://www.usccomm.com/respiratory/ACR2020/Assassi>